

# 2025 Annual Report

January 25, 2026

## Celebration Lutheran Church



**Annual Meeting  
January 25, 2026**

## Inside This Report

# Table of Contents



	<b>Agenda</b>	<b>p. 3</b>
<b>Introduction</b>	<b>Minutes of 2025 Annual Meeting</b>	<b>p. 4</b>
	<b>Council President's Report</b>	<b>p. 5</b>
	<b>Council Members</b>	<b>P. 6</b>
	<b>Ministry in Daily Life - Altar Guild, Evangelism, Prayer Chain, Outreach</b>	<b>p. 7-12</b>
<b>Ministry Team Reports</b>	<b>Spiritual Growth - Youth, Worship &amp; Music, NCW Cluster, Adult Education, Children &amp; Family, Fellowship, Visiting Angels</b>	<b>p. 13-25</b>
	<b>Property: Grounds &amp; Property, Community Garden, Stewardship-Service Group, Kitchen</b>	<b>p. 26-30</b>
<b>Stewardship and Financial Reports</b>	<b>Stewardship, Team</b>	<b>p. 30</b>
	<b>2025 Financial Reports</b>	<b>p. 31-33</b>
	<b>2026 Proposed Budget</b>	<b>p. 34-36</b>
	<b>Worship Attendance</b>	<b>p. 37-38</b>
	<b>2025 Statistical Report of Members</b>	<b>p. 39-40</b>
	<b>Active Membership</b>	<b>p. 40-44</b>
<b>Statistics</b>	<b>Directory of Members and Friends Email Directory</b>	<b>p. 45</b>
	<b>Note from Bishop Meggan Manlove - Northwest Intermountain Synod, ELCA</b>	



# 2026 Annual Congregational Meeting Agenda

## January 25, 2026

**I. Opening Devotions**

**II. Approval of Agenda**

**III. Minutes of January 26, 2025 Annual Meeting**

**IV. Oral Reports**

- A. Council President Report
- B. Other

**V. Acknowledgement of Written Reports**

- A. 2025 Financial Report
- B. 2026 Budget Proposal

**VI. New Business**

- A. Elections:
  - Council Members
  - Nominating Team
  - Voting Members to Synod Assembly



**VII. Adjournment**



# Minutes of Congregational Meeting

## ANNUAL CONGREGATIONAL MEETING: January 26, 2025

### Call to Order

The meeting was called to order by Council member Dan Hiatt in the Fellowship Hall at 11:27am at Celebration Lutheran Church, 801 – 8<sup>th</sup> Street NE, East Wenatchee, WA.

### Opening Devotions:

Pastor Sarah Toney opened the meeting with a prayer.

### Roll Call

A sign-up sheet was passed to congregants who were in-person. Darcie Price recorded names on a sign-up sheet as members confirmed their verbal & hearing attendance via Zoom. 48 confirmed members in attendance and via Zoom.

### Approval of the Agenda

A motion by Betsy Schweitzer to approve the agenda as presented. Second by Jacki Seale. All in favor - motion passed.

### Approval of the Minutes

A motion by Bruce Herring to approve meeting minutes of the January 28, 2024 Annual Congregation meeting as presented. Second by Susan Gubsch. All in favor of approving 1/28/24 meeting minutes; motion passed.

### Oral Reports

Pastor Sarah commented on a great 2024 year for Celebration, and to refer to the 2024 Annual Report for Oral Reports by ministry leaders.

### Financial Reports:

#### **2024 Financial Report**

Annette Eggers made a verbal presentation of the financial report referencing the finance section beginning on pg. 29 of the 2024 Annual Report.

#### **2025 Budget Proposal**

Annette Eggers presented the proposed budget for 2025 which can be reviewed beginning on page 32. Page 29 includes a verbal picture of how the budget was created.

A motion by Mary Bywater to accept the 2025 budget as presented and recommended by council. Second by Richard Seale. All were in favor of accepting the 2025 finance budget proposal; motion passed.

### New Business

The election of new officers, the new nominating committee and voting members to synod assembly.

### **Elections:**

Council President: 1 year term - Betsy Schweitzer

Council Member: 2 year term - Laurie Holmes

Council Member: 3 year term - Debbie Cockle & Barbara Weaver

2025 Nominating Committee: Judy Hussey & June McCann

2025 Voting Members to Synod Assembly: Dan Hiatt & Marcia Webb

Jim Cockle motioned to close nominations. Bruce Herring seconded the motion. Ginny Taplett motioned to accept the slate of officers. Scott Erickson seconded the motion. No discussion or questions. All in favor; officers elected.

### Adjournment

A motion was made by Mark Schweitzer to adjourn the meeting. Second by Mike Hussey. All in favor; motion passed. Meeting adjournment at 12:29pm with the Lord's prayer.

**Submitted by: Darcie Price (acting secretary)**



# Council President's Report

Betsy Schweitzer

**1 Thessalonians 5:18**

**“give thanks in all circumstances, for this is God’s will for you in Christ Jesus.”**

I think this is the most fitting theme for me this year “Thankfulness”. I am thankful to have worked with the best people, that stepped up to be council members this year. We have worked really well together, which has made my first year as President an easy transition.

I am thankful for Bernadette to have applied for her position. She is a great asset to our church and has made the leaving of our beloved Darcie also an easy transition.

I am thankful for when we called our congregation last year to give just a little more, they answered us and we ended the year with a positive balance, after presenting a negative balanced budget.



I am thankful for our former president Dan Hiatt for working so hard on the updated church Constitution that we are presenting, and helping Sarah and I with updating the By-laws.

I am most thankful for Pastor Sarah, she continues to be such a blessing to me, the council and of course our congregation.

The reason for all that I am thankful for is because of God’s love for us. He continues to Bless me in ways I don’t even expect. What a wonderful father.

“Give thanks to the Lord, for his love endures forever”

God Bless all of you,  
Betsy Schweitzer  
Celebration Lutheran Church Council President



## Council Members

*Thank you for your service!*

### 2025 Council Members

### Term Expires

### Open Seats

### Term Expires

Betsy Schweitzer (President)

End of 2025

Council President

End of 2026

Barbara Weaver

End of 2027

Council Member

End of 2027

Debbie Cockle

End of 2027

Council Member

End of 2028

Pat Guizzetti

End of 2025

Jeremy Long

End of 2027

Cal Johns

End of 2026

Laurie Holmes

End of 2026

Nominating Team

End of 2026

Voting Members-Synod Assembly

End of 2026

### Nominating Team

June McCann

End of 2025

Judy Hussey

End of 2025

### Outgoing Council Member

Laurie Holmes

Pat Guizzetti

### Voting Members-Synod Assembly

Marcia Webb & Dan Hiatt

End of 2025





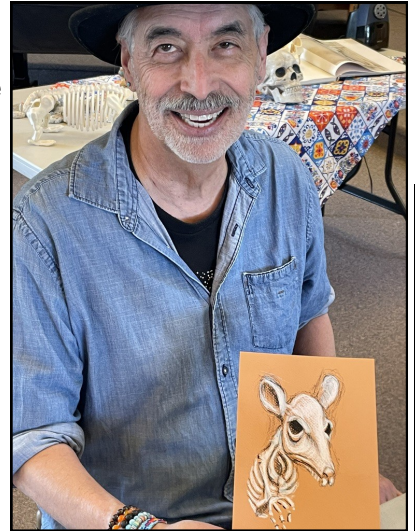
## Ministry in Daily Life

### Altar Guild & Liturgical Arts Team

Each season of the church year has corresponding colors and symbols that are intended to help us focus on the themes of the season. For example, Pentecost and Reformation are associated with red. These are days that are full of the Holy Spirit, symbolized by fire and movement. On the other hand, Advent is a time characterized by waiting for Christ's birth while still in the dark. This season's color is blue while Christmas is white, representing the dark that transitions to the light of the coming of Christ.

The Altar Guild are the dedicated volunteers who track the church calendar and attend to the changing of banners and other elements of color and art throughout the church year. Many thanks to Jacki Seale and Judy Hussey who comprise the core of our Altar Guild team.

The Liturgical Arts team, launched in part thanks to a synod Share grant, helped bring Lent and Easter to life with new banners and tie-dyed altar cloth, which supported the theme of Lent in 2025 – The Great Chain of Being.



We started our exploration of Lent with an intergenerational art lesson with Terry Valdez, exploring charcoal drawings of natural artifacts of animals. Each week of Lent focused on a particular “link” in the chain of being, such as stars, rocks, and water as our first week. Every element of worship focused on the theme each week, including a special hymn rewritten for the insect week by Dave Haven called Bugs, Bugs, Bugs. In addition, the congregation had weekly homework handed out by the kids, nature lessons from the Sunday School, and a growing display of the Great Chain of Being in the narthex.

Julie Bay attended a week of exploring liturgical arts at the Grunewald Guild where she explored the season of Epiphany, resulting in a new woven band for the altar. Julie also created a weaving depicting the liturgical calendar, which is hung in the hallway past the Sunday School room.

For Advent, the altar guild used the beautiful banners created the previous year and added additional elements of stars and illumination for the Christmas season, including a new woven altar cloth made by Julie Bay and Nancy Gradwohl with a gold and silver cross on which was written each of the prayers and places of despair named by the congregation during Advent.

Many thanks to Judy Hussey, Jacki Seale, Terry Johns, Liz Arbaugh, Shan Forsberg, Darcie Price, Nancy Gradwohl, Julie Bay, Brant Smith, and Cole Price who joined in to help with the design, creation, and installation of the liturgical arts year at Celebration!









# Evangelism

## Ministry Members: June McCann, Debbie Cockle, & Congregation

June McCann has continued to celebrate members birthdays each month with a cake and a song during coffee hour after church. We all appreciate June's efforts!

Debbie Cockle has joined the Evangelism Committee and is sending cards to visitors, those dealing with personal challenges or health concerns. She also has put together visitor packets which include a welcome card, a snack and a pamphlet from Celebration Lutheran Church. The pamphlet includes our CLC mission, vision, opportunities within our church, contact information and more. The Greeters are helping to give these out to visitors as they arrive.

The church council is also helping to reach out to visitors on Sundays which has made a difference for those who are new to Celebration.





# Prayer/Information Chain

**Prayer Chain Coordinators:**  
**Pastor Sarah,**  
**Bernadette Phillips**

## **Celebration Lutheran invites you to be a part of a special Prayer Chain Ministry.**

Members and friends of the congregation can request to the Prayer Chain coordinators that prayers and church related information be sent out to church members in a timely fashion. We have found many church members appreciate prayerful support when they or their loved one is going through a crisis. This is also an important way to praise God for the blessings we receive in our lives and is another way to stay connected with your Celebration family.

## **We do have a few guidelines to follow regarding using this prayer/information chain.**

Requests can be made for persons either within or outside our congregation to either the office or Pastor Sarah. Whenever practical, for reasons of privacy, please obtain permission from the person who is the subject of the prayer request before putting them on the prayer chain. The prayer chain coordinators reserve the right to edit content of prayer/information requests for content or brevity.

**If you would like to receive/request prayers requests** by e-mail, contact the **church office (884-3817 or [office@clcwen.org](mailto:office@clcwen.org))** to be put on Celebrations prayer/information chain. When you receive information or a prayer request, you do not need to forward this information on to another individual. This is an effective and important ministry within our congregation and we want it to be as efficient, accurate and easy to use as possible for prayer/information chain participants and recipients.



**Thanks to all of you for your support  
and prayers of this  
very special and  
powerful ministry!**

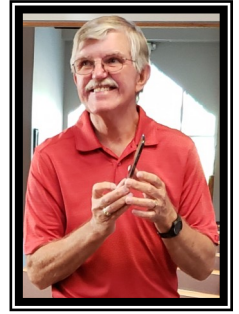




# Outreach

Ministry Team Leader: Dan Hiatt

Members: Dan & Debbie Hiatt, Cal & Terry Johns, Pat Guizzetti, Laurie Holmes, Brant & Elaine Smith, Shirley Michel



Each of you should give what you have decided in your heart to give,  
not reluctantly or under compulsion, for God loves a cheerful giver.

*2 Corinthians 9-7*

As we started 2025, the Outreach Committee discussed various opportunities we have to improve our ministry. We decided to prioritize local organizations for our giving and to seek projects that promote congregational participation. Throughout this past year we have partnered with non-profits that have proven themselves to be effective and efficient in assisting those in need in our community. These include

**Serve Wenatchee Valley** which provides essential resources like rental assistance, groceries, and furniture to help prevent homelessness in the Wenatchee Valley.

**Communities in Schools** connects students to school and community resources and provides individual support within the classroom through a network of caring adults. 99% of their students were in school throughout the year and 97% went on to the next year.

**Community Action Council** assists individuals and families to move out of poverty into a lifestyle that promotes a safer and healthier living environment. The Celebration Church Packing Friendship ministry shopped in the CAC no cost food distribution center for a time this past year.

**2nd Harvest** provides a large food truck to communities throughout the region for food distribution through local volunteers to community members in need.

**Wenatchee Sunshine Bowling League** provides assistance to physically disabled participants so that they can enjoy bowling together. We sponsor two bowlers each year.

**ELCA Disaster Relief Fund** has an excellent record of collecting and distributing resources where needed with no administrative costs. We responded to their appeal for donations to help flood victims in Kerr County, Texas.

**Packing Friendships** provides bags of food for weekends for school children that qualify for food assistance at school during the week. We currently serve 47 students between Grant Elementary and Head Start.

The uncertainty of federal funding and the temporary suspension of SNAP benefits in 2025 made the already difficult mission of non-profits much more challenging. Hopefully (and prayerfully) 2026 will be a little more stable. In the meantime, we on the Outreach Committee are so thankful for your support, both your donations and your time. Thanks to your participation in the yard sale and our annual auction, nearly \$ 7,000 was raised for distribution to our neighbors in need. Additionally, our 2nd harvest food truck ministry attracted 27 volunteers and provided boxes of food to 214 families (10,000 lbs!), and approximately 25 volunteers helped with our yard sale that was busy all day long!

The members of the Outreach team enjoy being one extension of Celebration into the community but seeing the participation of our members is even more rewarding. Thank you for all you do.









## Spiritual Growth

## Youth

A Confirmation retreat at the beautiful grounds of Lutherhaven on April 25-27 was the highlight of our past year's Confirmation program, with Pastor Sarah and myself accompanying five of our youth to this event for youth across our Synod. A fun weekend for all also featured a outdoor camp cleanup service project on Saturday and worship on Sunday as visitors at Lutheran Church of the Master in Couer d'Alene, ID.

To better accommodate the families of our students, our Confirmation class schedule moved from an after-worship time of 11:15 AM to 9:00 AM in the fall of 2025. We are using an excellent ELCA resource called Colaborate, which is designed to be a four-unit course spread over two years. Pastor Sarah and I decided to make this a three-year program to make it a "better fit" for our younger confirmands, because they require more time to absorb and reflect upon the material, and we want them to have other opportunities for special activities. I arranged to have private tutoring classes for Cole Price during the week so that he can complete the class material in two years and be confirmed in May 2026.



At the beginning of our Fall schedule, I recruited students Serenity and Blaze Stumpf and Nolan Bonwell to stage a skit for Rally Sunday called "Bored Youth in Church" which tried to answer questions about why we have so many traditional elements in our worship services. In December they participated with the Elementary Sunday School students in our annual Christmas program, led by Ann Black, Janelle Bersch, Pastor Dave and Lee Ann Haven, and other members of our worship music team.

Our Senior High youth gathered in the Fall with Pastor Sarah and myself at Darcie Price's home to plan activities for 2025-2026. They like getting together, but also have so many family activities and individual pursuits that it makes having regular events difficult. The youth have a lot of great ideas for activities and with a little adult support and encouragement will get together a few more times in the coming year. So far they have participated in our Christmas program, been Scripture readers on third Sundays, and went "hunting" in December with the Junior High youth, Pastor Sarah, Pastor Dave and Lee Ann Haven and a few other adult volunteers to find Christmas trees for the Sanctuary and their families. The Christmas tree harvest was followed up with hot cocoa, pizza, and gingerbread house making at the church.



A big THANK YOU to our volunteers and our church families for all your support as Pastor Sarah and I work to encourage and help our youth to be part of the life and ministry of Celebration Lutheran.

-Rev. Alan Oppelaar





# Worship and Music

**Ministry team leader: Susan Gubsch**

**Ministry team members: Annie Chalmers, Kathy Jo Evans, and Pam Wallis**

Celebration has been blessed with another year of vibrant music and worship. We are thankful for the gifts of our rotation of worship pianists, including Annie Chalmers, Kathy Jo Evans, Nancy Furness, Susan Gubsch, and LeAnn Haven. In addition, we had many other musicians share their talents in 2025 on other instruments: Kent, Annie, Brooke, Oliver and Finn Chalmers, Jenna Cummings, Emily Graham, Dave, LeAnn and Micah Haven, Bernadette Phillips and Pam Wallis.

What a joy to receive the new All Creation Sings hymnals, gifted by Dave and LeAnn Haven. We taught the liturgy Setting 12 during the season of Advent. We look forward to exploring more of the hymns in this purple hymnal in 2026.

Barbara Weaver helped us practice singing harmonies during our Christmas season. We had meaningful Lenten and Advent Wednesday night services as well, using Holden Evening Prayer. Our festival services of Easter and Christmas Eve were wonderful.

Our committee continues to meet every two months to plan meaningful worship services with Pastor Sarah. We welcome your ideas! If you are interested in singing or performing during worship, please contact one of the committee members.

Make a joyful noise unto the Lord!  
Susan Gubsch







### *Worship Committee and Preparation*

The Worship Committee meets every two months to plan the music selections for each service. The Worship Committee in 2025 is Annie Chalmers, Kathy Jo Evans, Susan Gubsch, Pam Wallis, and Pastor Sarah. For each week's service, Pastor Sarah gathers material from primarily Lutheran worship resources, along with the Worship Committee's music selection, to craft weekly and special services. The scripture readings are usually from the Revised Common Lectionary, which most major denominations use around the world.

### *Livestream and Online*

Our faithful technology gurus who managed the online worship on YouTube. Thank you, Steve and Liz! Thank you to all our other volunteers and those at home learned a new way of doing things. Bernadette is continuing to provide bulletins online each week for those watching from home. Pastor Sarah also posts the texts of her sermons, along with the lectionary readings and service recording as a blog on the website each week. These blog posts are easily shared and see some of the highest traffic on our website, as people are engaging with God's Word at home.



### *Volunteer Helpers*

Worship requires many hands! Every week, one of our youth helps with lighting the candles (acolyte), while others help with communion. We also have readers, greeters, ushers, and communion assistants to help people feel comfortable, welcome, and be fed at the Lord's table. You are always welcome to get involved with worship!



### *Lent and Easter*

During Lent, we explored the "Great Chain of Being," which is a medieval concept about how all of creation is included in Christ. Each week we celebrated a link in the chain, such as single-celled organisms or plants. Our Sunday School taught the congregation each week and handed out the weekly homework, encouraging us to notice God in each aspect of Creation. We then celebrated Maundy Thursday, Good Friday, and of course Easter Sunday.





### *Taizé Prayer*

Celebration hosted one of the Taizé Prayer Services that Grace Lutheran organized. We gathered for prayer, meditation, song and readings using the worship from Taizé, France for an evening of quiet reflection, music, and prayer.

### *Grace Lutheran*

This year, Grace Lutheran Church joined us for three Sundays in September while their sanctuary was under construction. It was wonderful to host them!



### *Pastors from Tanzania*

We were honored to welcome Pastor Wilson Nyakachewa and Pastor Ezekiel Mwambungu from the Ulanga Kilombero Diocese in September! Pastor Ezekiel preached to both Celebration and Grace Lutheran, and service was followed by a special presentation about their life and ministry in Tanzania

### *Rally Day*

Celebration enjoyed Rally Day for the beginning of the children's and youth's year of learning. This years theme was "Bee like Jesus" with fun bumblebee themed activities!

### *Advent*

Advent services were held on Wednesday evenings. The congregation sang Holden Evening Prayers and engaged in Advent-themed poetry as a means of engaging more deeply in the themes of the season. With this small group, we were able to listen to each other's reflections and stories.

### *Christmas Eve*

The Celebration Christmas Band was in wonderful form and delighted us all. We gathered to sing, give thanks, love each other, and revel in the mystery of Christ's birth. The band included LeAnn and Dave Haven, Micah Haven, Emily Graham, Jenna Cummings, the whole Chalmers family (Kent, Annie, Brooke, Oliver, and Finn), Laurie Neal, Bernadette Phillips and Maren & Annika Peterson. The last Sunday of the year was Lessons in Carols with Kathy Jo Evans playing piano and Pastor Sarah leading us through 9 scriptures detailing the story of Christmas.





### *Feast Days of the Church Year*

Celebration participated in the many feast days of the church year that are in addition to the major seasons of Easter and Christmas. These include Epiphany, Baptism of our Lord, Pentecost, All Saints Day, Reformation Sunday, and Christ the King Sunday.

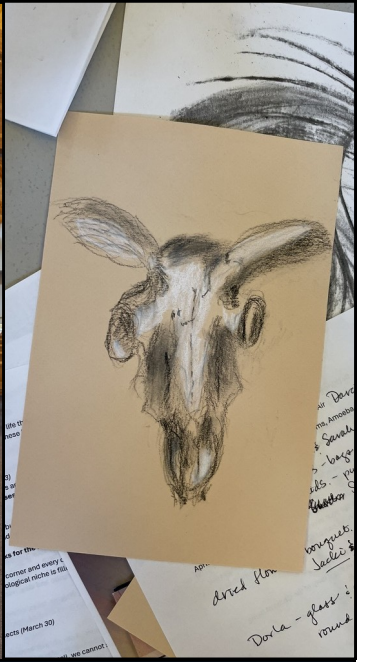
### *Bonaventure*

Each Thursday at 10am, several pastors of the area (James Aalgaard, Nancy Gradwohl, Dave Haven, Alan Oppelaar and Sarah Toney) rotate in bringing worship to the residents of Bonaventure. This small congregation at Bonaventure includes members of Celebration. Darcie and Bernadette provide this group with bulletins and materials to support them in their worship.

Indeed, it has been a wonderful year of worship at Celebration!









### *North Central Washington Cluster Meetings*

Celebration hosted two cluster meetings in 2025 for the pastors of our local ELCA congregations which include, Faith Lutheran in Leavenworth, Grace Lutheran in Wenatchee, Fullness of God in Holden Village, Lake Chelan Lutheran in Chelan, St. Paul's Lutheran in Quincy, and Holy Trinity in Ephrata. Retired pastors and pastors working in specialized ministry also attend cluster meetings.

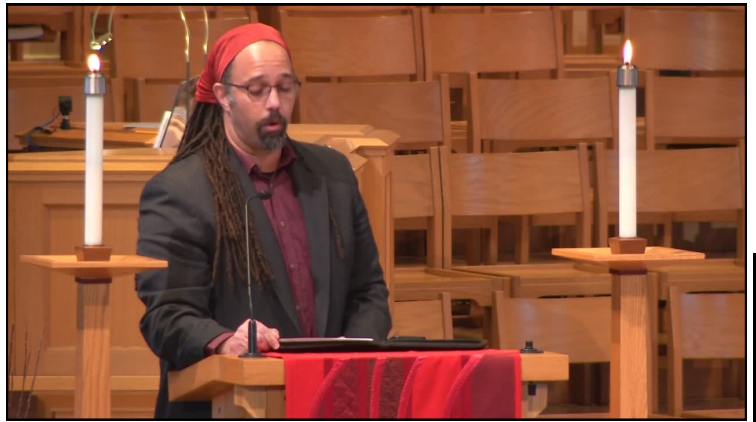
Pastor Sarah also attended a third cluster meeting in 2025 at Lake Chelan Lutheran in the summer. Rev. Paul Pumbo is the Dean of our cluster, who helps connect Celebration with the synod. In addition, Rev. Pumbo is a source of support and resources for Celebration.

### *Cluster Text Study*

Many of the cluster pastors located in Wenatchee, Leavenworth, and Cashmere gather at Celebration for a weekly text study in preparation for Sunday preaching. These text studies are attended by both retired and active pastors for fellowship, faith formation, and sermon preparation. Many of our area's "retired" pastors continue to provide pulpit supply, pastoral care support, and engagement in social services.

### *2025 NWIM Synod Assembly*

The Northwest Intermountain Synod hosted a series of regional gatherings to help people gather across the synod. Elaine and Brant Smith attended the synod assembly, along with Pastor Sarah. Bishop Meggan Manlove led the gathering, sharing news, stories, and encouragement for all in attendance. Worship was led by Rev. Liv Andrews (Director of Evangelical Mission). Grace Pomroy walked us through re-imagining stewardship and strategies for funding small congregations while serving the community. The gathering was held at First Lutheran Church in Ellensburg, Washington.



### *First Call Theological Education*

As a relatively new pastor, Pr. Sarah is required to attend the ELCA region's First Call Theological Education retreat for three years. This year's retreat was located at Seabeck Conference Center on Hood Canal. It was a beautiful three days of meeting new pastors from Oregon, Idaho, Washington, Montana, and Alaska. The keynote speaker for the event was ELCA Bishop Leila Ortiz, focusing on the ecology of the estuary as a metaphor for death and resurrection.

### *Bishop's Convocation*

The Bishop's Convocation was held in Richland in October of 2025. Pastors from across our beautiful synod gathered to pray, worship, be in community, and learn. The guest speaker was Dr. Anthony Bateza who is a professor at St. Olaf College. His presentation was focused on building communities of trust in a time of division so that our hearts and behaviors may be shaped by the love of Christ that we share.

### *Meeting for Racial Justice*

Pastor Sarah attended a gathering of racial justice leaders across the ELCA as the representative from our Northwest Intermountain Synod in Chicago at the ELCA Churchwide Office. The gathering was an opportunity to meet new colleagues and friends, learn from other synods about their work in support of racial justice, be refreshed by worship, and learn from racial justice experts.





# Adult Education

Most Sundays at 9am, adult learners gather before service to engage in deepening their faith, connecting with each other, and learning about the Bible, church history, theological ideas, and larger issues. The Adult Forum enhances worship by engaging in the themes of the church calendar.

*January – February* – During the seasons of Christmas and Epiphany, we focused on the radical message of God becoming human by reading Fr. Richard Rohr’s book, “The Universal Christ: How a Forgotten Reality Can Change Everything We See, Hope For, and Believe.”

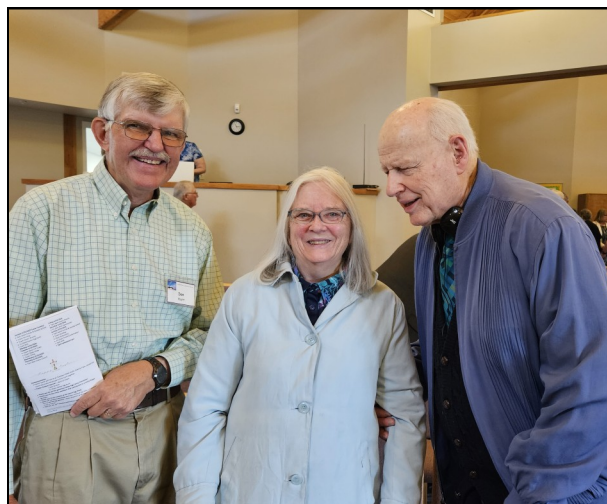
*February – March* – Through Lent, we explored the themes of death, resurrection, and repentance through the poetry of Mary Oliver’s book, Devotions. We used a devotional resource from SALT that focused our journey through Lent with Mary Oliver’s particular focus on the natural world.

*April – May/June* – After Easter, we turned our attention to exploring spiritual practices by reading together “The God of Intimacy and Action: Reconnecting Ancient Spiritual Practices, Evangelism, and Justice” by Tony Campolo and Mary Albert Darling. This text explores the importance of spiritual practice and the many different practices the church has developed over the past 2,000 years, including lectio divina, centering prayer, and the daily examen.



*September* – The Adult Forum group wanted to focus their exploration next on how people of faith navigate a world of division and injustice, which is the focus of Fr. Richard Rohr’s book, “The Tears of Things; Prophetic Wisdom for an Age of Outrage.” Rohr’s book examines the common transformational arc of many of the prophets in the Old Testament from outrage to expansive love. He suggests this transformation is available to us all and can be a model of how to most effectively advocate for justice in an unjust world.

*Advent* – We returned to the poetry of Mary Oliver for the season of Advent with a second devotional from the SALT Project. Our discussions of the season are deepened and enriched with Oliver’s poetry and the perspective of the devotionals.





# Children & Family Ministry

**Ministry team leader: Ann Black**

**Ministry team member: Janelle Bersch.**

Working with the students in Sunday School is truly a joy! We meet on Sundays throughout the school year at 9 AM before the worship service at 10 AM. We have any number between 5-11 students each Sunday. They are a wonderful group of children from our regulars to the occasional "drop in". We regularly enjoy good discussions and questions about the stories from the Bible and are always impressed with their understanding and willingness to express their faith.

This year we began at the beginning of the Bible with Creation and early Bible leaders, like Noah, Abraham, Isaac, Jacob, Joseph, and Moses. We will continue to pick up there and finish the Old Testament with Ruth, Samuel, & David. Then we will move into New Testament stories of Jesus' time on earth, focusing on his teachings and ministry. We will then continue through the early work of the Apostles from Peter to Paul. We are using the Enduring Faith curriculum from Concordia Publishing.

Each week the students enjoy a Bible Story, some crafts or puzzles, and always, the all-important snack. They have enjoyed taking material that they have learned and presenting it to the entire congregation as an opportunity to share their beliefs and faith with the adult community. They also enjoy acolyting and helping with communion. Always a highlight, the Christmas program afforded the students an opportunity to share that simple gifts are the best, especially when they are given with love, as the gift of our precious Savior on Christmas.





# Fellowship

## *Winery Visits*

Every month we visit a winery or a cider tasting room to enjoy each others company and enjoy some wine!



## *Welcome Parties*

Twice this year our members opened their homes to welcome new people to Celebration. Thank you Dan & Debbie Hiatt and John & Kathy Jo Evans!

## *Pastor Sarah's Birthday*

This year our Pastor turned 50! Celebration members celebrated by filling the Sanctuary with 50 balloons and joining her at a winery.





### *Darcie's Going Away Party*

This year, we said goodbye to our Office Manager Darcie Price as she decided to go back to school. Her going away party was an afternoon of fun and support, and we wish her all the best on her journey going back to school!



### *Christmas Tree Hunt*

Once again we found the perfect tree for the Advent season. It served as a beautiful backdrop to our Advent and Christmas Eve services, and we had fun decorating too!



### *Nate's Physical Therapy Class*

Every Tuesday at 10am Celebration members gather together for physical therapy. Each class focuses on balance and building strength, and afterwards participants enjoy some coffee and fellowship. Everyone is free to come and join!

### *Trunk or Treat*

Celebration hosted a fun and successful Trunk or Treat this past Halloween! Many members donated candy, and others decorated their trunks and dressed up in a fun array of costumes. Over 300 families passed through, and we even almost ran out of candy! Thank you Celebration for providing a fun and family friendly experience!









# Visiting Angels

Celebration Lutheran has beloved members and friends who no longer can make it to church in person. However, they are still members of our beloved community! While the pastor visits these folks, occasional visits by just one person only goes so far to help our folks feel connected and cared about.

The Visiting Angels ministry is a way for our angels at home to be visited by angels. Everyone's an angel in this ministry! Visiting Angels started in September 2024, beginning with 8 volunteers to visit 7 people or couples at their homes.

We want to thank Brant & Elaine Smith, Debbie Cockle, and Ginny & Larry Taplett for their generosity in volunteering for this program.

If you are interested in being a Visiting Angel, please see Pastor Sarah or Bernadette.





# Grounds & Property

Here it is, one more year gone by. The property is doing well, the grass is coming back and should be in great shape this next spring and summer. There are the same things on the property that need up keep as usual, the work of maintaining the property and controlling the weeds, mowing the lawn, and keeping the irrigation up and working. The work by many individuals needs to be recognized here, Dan Hiatt, Mark Schweitzer, Gale Webb, Julie Bay, Darcie Price and Cole, Bruce Herring, and Brant & Elaine Smith and Wolf Mueller. Volunteers are always needed and appreciated when snow removal is taken care of.

Again, thanks to Mark Schweitzer for all his help in maintenance on the ground's equipment, and additionally the use of his trailer at the end of the growing season closing out the community gardens. Thanks especially to Gale Webb for stepping up with help on irrigation on the church property.

Questions, concerns or if you would like to join us in this ministry, please call Cal Johns 679-9993.









# WSU & Celebration's Collaborative Community Garden

Volunteers: Dan Hiatt, Cal Johns, Elaine & Brant Smith, Darcie Price, Pr. Sarah Toney, Mark Schweitzer and more!

The 2025 (fourth season) collaboration between Celebration and the WSU Extension, WSU SNAP-Ed Nutrition Education Program, and the Chelan-Douglas Master Gardener Program successfully filled all 27 community garden plots in addition to the north garden.

The focus of this collaboration is to open up the ability to reach people of limited income with families living in housing projects, apartments or small homes that do not have access to garden areas. With the addition of the Master Gardeners & SNAP-Ed Nutrition educators, their goal was in teaching gardening skills and how to plant a garden that provides a healthy opportunity to eat more fresh fruits and vegetables, increase exercise and supplement the family income. Involving children in the gardening project taught them about family projects, how their food is grown and the enjoyment from eating fresh foods. Educational handouts in English and Spanish were provided by the WSU Extension office & Master Gardeners. Each Wednesday evening during the growing season, SNAP-Ed Nutrition educators and the Master Gardener volunteers taught cooking & gardening classes. These classes are available to anyone who wants to come learn about gardening.

The 2025 community garden has proved to be a rewarding and productive season. We've learned a lot, both gardeners and facilitators to be able to enjoy the fruits of labor. Cal Johns was diligent in maintaining and fixing various irrigation issues, communicating various tasks needing attention and assisting Darcie in all "things" garden. Celebration enjoyed several returning gardeners as well as some new additions. We learned throughout the season that a real life meaningful community has been forming and blossoming amongst the gardeners over the last 4 seasons. The gardeners uplift/advise/support one another and have made friendships beyond the garden. They have also blessed Celebration with their produce, the care for the land, helping Darcie, Bernadette, & Cal with various garden tasks and being the "eyes & ears" for the land when we are not here.

If you are interested in providing food wastes to WintonMFG Compost project, you can sign-up at <https://www.wintonmfg.com>. Celebration is a drop-off/pick-up site for WintonMFG within our community. The buckets and info are in Bernadette's office, once you have signed-up.

Looking ahead to 2026's community garden, provides many opportunities to serve and be blessed by the families, friends & many different community members at Celebration's property. Several of the garden plots have been spoken for already.

**You are encouraged to come to the garden, walk about, take pictures, pick some weeds or just visit with gardeners. We are all a part of the bounty!**





# Stewardship

# Service Group

Team Members: Jacki Seale, Terry Johns, Judy Hussey, Debbie Hiatt, Ginny Taplett, Debbie Conde, Bruce Herring, and June McCann

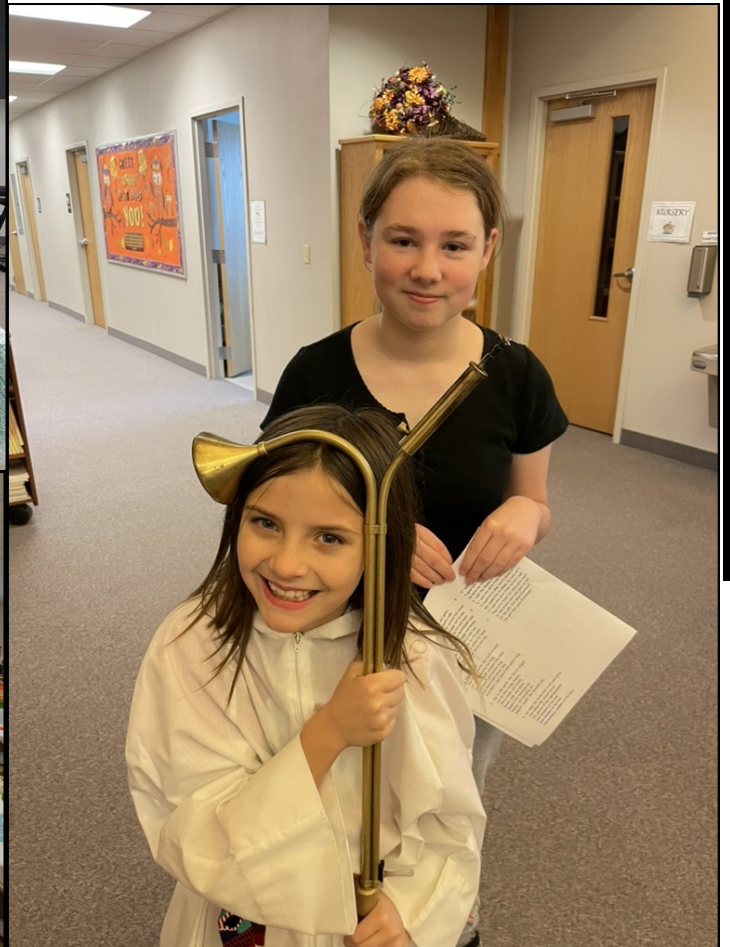
Participate in the flow of God's love through the practice of hospitality and service during Worship. Each Sunday worship offers various ways to express and practice our Christian faith.

Please consider volunteering to assist with Sunday worship. Volunteers are needed each week to greet, usher, serve communion and set-up & clean-up for fellowship. You can also volunteer to make coffee, bring treats and bake the communion bread. Guidance and training are provided. We're happy to support you!!

Thank you to Ann Black (Sunday School Director) and the children of Sunday School for their help in assisting with acolyte & communion. Thank you to all our members who volunteer faithfully each Sunday. If you are interested in reading lessons during the worship service please call June McCann.

*Please consider serving.* Please call , Terry Johns 509-679-0127, Debbie Hiatt 206-321-5053, Ginny Taplett 509-884-4186, Jacki Seale 509-860-5582, Bruce Herring 509- 387-1320, Debbie Conde 206-303-7793, or June McCann 509-670-5207 to learn more.

**Thank you in advance for your willingness to serve!**





# Stewardship

# Kitchen

## ***Team Leader: Ministry Opportunity***

The Celebration kitchen is used by many groups on a daily, weekly and monthly basis and one time special events. Our kitchen use continues to grow!

If you are part of a group that meets regularly at Celebration and utilizes the rooms, fellowship hall and/or the kitchen - please do your part to help keep this facility in tip top shape and keep maintenance costs down as well! You will find a "TO DO" checklist just inside the kitchen on the wall to follow while enjoying the facilities of Celebration's kitchen!



## **Stewardship Team**

### ***Ministry Opportunity!***

People tend to avoid stewardship, because asking for money when there's not enough feels so very hard. We live in a world where we are constantly told that there is not enough of anything; time, money, or resources. *And yet we believe in an abundant God who provides all things!* To step into stewardship is to step into a richly fulfilling exploration of what God's abundance in our lives looks like and feels like.

For those among us who would like to explore God's abundance in our lives, consider helping to revitalize the Stewardship Team. Pastor Sarah will be with you to guide conversations, help with the work, and brainstorm ideas.

Thankfully Celebration is mostly financially stable. Your job wouldn't be to put out fires, but to wonder with ministry leaders about:

1. How is the Holy Spirit moving in our congregation?
2. How do we make the Spirit's nudgings happen?
3. What are the good stories we should be telling others about?

Who needs to be showered in gratitude and love for their ministry and care for others?

Many thanks to all who give of themselves to make Celebration a vibrant and growing faith community! And there's more on the way! Working in Stewardship is an exciting and powerful way to be a part of the movement of the Spirit in our midst. Contact Pastor Sarah or Bernadette if you'd like to get involved.



The 2025 Statement of Financial Income and Expense are reviewed in 2 parts, the General Operations Fund beginning on the next page and the Designated Funds on the following. These two reports state the income and expense for each fund, the general fund captures the categories only. You will find a full detailed account of income and expense along with some historical data following the brief reports. The General Operations Fund includes all daily income and expenses of Celebration. In addition to the income & expense reports, there are many historical documents through-out the finance pages of this Annual Report. There is a monthly finance report in the Newsletter and a snapshot in the council meeting minutes posted by the office doors. If any one has any questions in regards to the daily financial works of Celebration Lutheran Church, I encourage you to come and visit with me.

**2025 Income for the General Operations Fund:** General Contributions came in significantly over budget at \$25,216.85. Building Use donations were over budget by \$1418 due to conservative budgeting on building use. Mortgage was paid in full in July, 2023. They have been some challenges with the city planning that did not allow us to receive any Rental Income in 2025. Our budgeted income for 2025 was \$236,690, and the total General Income for 2025 was \$259,690 after the interest, building use donations and processing fee donations were added. The overall Income for the General Fund for 2025 was a welcoming surprise! There were several large gifts that were not designated funds and we are appreciating the gifts of those who came before us who have included us in their legacy planning.

**2025 Expenses for the General Operations Fund:** Celebration administration and teams have done an excellent job in 2025 keeping most expense line items under budget! Even with increases of utilities, property taxes, postage and some supplies, most line items came in on or under budget. General Operations Fund expenses totaled \$225,326.05 compared to our budgeted expenses of \$246,375 resulting in our total expenses being under budget by \$21,048.95.

**General Operations Fund Balance:** 2025 ended with a fund balance GAIN of \$34,465.24 in the General Fund. We budgeted for some additional support staff and other line items that had been being paid from designated funds. It is exciting to see the ministries that Celebration supports being supported by all of You! Our budgeted General Fund loss was \$9,685 and that is a positive difference of \$44,150.24. 2025 has an ending Fund Balance of \$123,754.51. We have a budget (2026) of roughly \$20,000 in monthly expenses which equates to just over 6 months of funds in the General Fund Balance. I have regularly recommended a fund balance of 4 to 5 months of regular monthly expenses to The Congregation and the Council. Healthy Fund Balances are maintained by consistent monthly incomes, ministries keeping tabs on their budgets and volunteers giving of their time & resources to help keep the costs of maintenance and other expenses down. As expenses continue to increase and the building ages, meaning more cost for maintenance in addition to less volunteer type services that we now budget for, a consistent and steady flow of income is needed to keep the budget inline. The fund balance continues to be an area that I watch carefully and report to council on regularly.

**Thank you for continuing to Support the Ministry Plan of Celebration Lutheran Church!**

## 2026

Celebration Council & staff have made some wonderful tools available to help the congregation continue their regular giving! You can mail your contribution, use the **GIVE** button that can be found on the Celebration Lutheran Church website (clcewen.org) or sign up for the **Simply Giving Automatic Plan**. Give the church office a call if you would like to give it a try or need assistance.

### 2026 General Operating Fund Budget

The planning & budgeting for 2026 was met with caution and excitement. The unexpected funds from 2025 could have allowed us to be frivolous and pretend that the same amount would come in this year but that is unrealistic. After conversations with givers and the council we came to a realized increase of just over \$7500 from the 2025 budgeted income would be safe and conservative. The expenses were firmed up to actuals, projected or requested by teams and staff, no new line items were added and with God's hands in all things I was able to present an in balance budget to the council with a \$206 General Fund balance gain. The budget reflects what we hoped for in 2025 to encourage families & youth within our congregation, allow for community engagement & outreach, in addition to meeting our commitments to care for our building, grounds and staff and these ministries will now continue and grow in 2026.

The budget reflects a few staff increases, some necessary office equipment, a new online contributions & membership program and funds to care for both interior and exterior projects. There is also a new line item under Evangelism "Communication Specialist" which we have decided not to fund from the general fund for 2026, it will be funded from Designated Funds for another year, as to keep the budget in balance.

**General Fund budgeted Income for 2026 is \$227,500.** The General Contributions have increased from 2025 due to additional commitments as discussed above. Building Use is those who give a donation to use our facility and the Interest Income reflects our investment and savings account interest.

**General Fund budgeted Expenses are \$239,794** and is about \$15,000 more than what was actually spent in 2025 and reflects the items mentioned above. We continue to budget in hopes that the Celebration Family continues to support the Ministry Plan of their congregation. It is always my plan when creating a budget that giving exceeds the budgeted amount and that expenses will come in lower than budgeted while still being realistic. If things go exactly as budgeted the ending fund balance for 2026 will come in just over \$123,900 giving us over 6 months of monthly expenses in our fund. This is a very healthy financial place to be!

I continue to be grateful for the opportunity to work with the wonderful people of Celebration in continuing to bless this congregation, community and world in Mission!

*Much Love, Annette*



# Financial

## Statement of Financial Income/Expense General Operating Fund January through December 2025

### General Fund Income

Building Use Donations	9218.00
General Contributions	245,216.85
Interest Income	5,135.00
Processing Fee Donations	296.63
Rental Income`	0.00

<b>Total General Fund Income</b>	<b>259,866.48</b>
----------------------------------	-------------------

### Expense

#### 65000 · Operations

65050 · ELCA Contribution	21,710.50
Total 65060 · Evangelism	949.57
Total 65080 · Congregational Outreach	0.00
Total 65100 · Adult Education	729.30
Total 65110 · Sunday School and VBS	599.58
Total 65120 · Youth and Family	8,922.78
Total 65130 · Worship and Music	2,251.99
Total 65140 · Stewardship	1,214.57
Total 65150 · Service Care	1,031.49
Total 65160 · Building	31,736.40
Total 65170 · Travel	3,102.25
Total 65180 · Administrative	10,336.60
Total 66000 · Payroll, Benefits, Tax Expenses	142,816.21

<b>Total General Fund Expense</b>	<b>225,401.24</b>
-----------------------------------	-------------------

**General Operations Fund  
Net Gain (-Loss)**

**34,465.24 (A)**

### Cash Flow Report:

Beginning cash balance (Banner Bank/ checking & savings/ Stifel Nicholas) 12/31/2024	75,671.24
CD #1 Banner Bank	60,000.00
CD #2 Banner Bank	51,407.52
Ending cash balance (Banner Bank/ Stifel Nicholas,) 12/31/2025	109,588.72
Liabilities Payable 12/31/25	(3,031.20)
	<b>217,965.04 D</b>

Income/Expense Summary by fund 2024	General	Designated	Total
Income	259,866.48	23,755.53	283,622.01
Expense	225,401.24	22,338.42	247,739.66
Net Gain (- Loss)	34,465.24 A	1,417.11 C	
Fund Balance 12/31/2024	89,673.78	92,793.42	182,467.20
Fund Balance 12/31/2025	123,754.51	94,210.53	217,965.04 D



# Financial

## Designated Funds Statement of Financial Income and Expense January through December 2025

	TOTAL			
Total Designated Income	\$23,755.53 (e)			
Total Designated Funds Pay Outs	\$22,338.42 (f)			
Net Gain (- Loss) Designated Funds	\$1,417.11 (C)			

	12.31.2024 Ending Balance	Income	Pay Out	12.31.2025 Ending Balance
DF Special Projects	\$ 63,007.78	\$ 8,860.00	\$ 7,903.89	\$ 63,963.89
Evangelism	\$ 173.88	\$ 0	\$ 9.23	\$ 164.65
Garden	\$ 3,504.58	\$ 1,071.00	\$ 982.95	\$ 3,592.63
Global/Local Missions	-	\$ 729.00	\$ 729.00	-
Key Deposit	\$ 150.00	-	-	\$ 150.00
Memorial Fund	\$ 1,979.06	\$ 1,019.00	\$ 1,426.37	\$ 1,571.69
Mntc & Repair Bldg/Grounds	\$ 1,174.13	\$ 0	\$ 0	\$ 1,174.13
National Youth Gathering	\$ 5,017.34	\$ 65.00	\$ 540.37	\$ 3,996.97
Outreach	\$ 10,473.07	\$ 10,223.26	\$ 6,161.64	\$ 14,534.69
Pastor Discretionary Fund	\$ 0	\$ 400.00	\$ 200.00	\$ 200.00
Quilters	\$ 203.07	-	\$ 203.07	\$ 0
Sabbatical Fund	\$ 1,336.42	-	-	\$ 1,336.42
Sunday School	\$ 671.81	\$ 123.77	\$ 100.00	\$ 695.58
Super Bowl of Caring	-	\$ 696.50	\$ 696.50	-
Thrivent	\$ 4,282.65	\$ 568.00	\$ 3,385.40	\$ 1,465.25
Wedding fees	\$ 25.00	-	-	\$ 25.00
Yard Sale	\$ 120.26	-	-	\$ 120.26
Youth	\$ 1,219.37	\$ 0	\$ 0	\$ 1,219.37
	<u>\$ 92,793.42</u>	<u>\$ 23,755.53</u>	<u>\$ 22,338.42</u>	<u>\$ 94,210.53</u>
		e	f	

12.31.24 DF Ending Fund Balance	\$ 92,793.42
DF Income	23,755.53
DF Expense	22,338.42
Ending Fund balance	<u>\$ 94,210.53</u>

## 10 Year Historical Income Report

	<u>2016</u>	<u>2017</u>	<u>2018</u>	<u>2019</u>	<u>2020</u>	<u>2021</u>	<u>2022</u>	<u>2023</u>	<u>2024</u>	<u>2025</u>
General Fund	223,091	224,363	226,896	226,909	198,256	190,909	199,799	199,620	198,860	259,866
Mortgage Fund	52,550	55,385	41,910	39,620	42,620	41,306	39,992	153,495	0	0
Total Income	<u>275,341</u>	<u>279,748</u>	<u>268,806</u>	<u>266,529</u>	<u>240,876</u>	<u>232,215</u>	<u>239,791</u>	<u>343,115</u>	<u>198,860</u>	<u>259,866</u>



# Financial - General Fund 2025 Statement of Financial Income & Expense, Historical Data and 2026 Budget

	2022 Actual	2023 Actual	Jan - Dec 24	2025 Budget	2025 Actual	2026 Budget
<b>Income</b>						
General						
Building Use Donations	4,330.00	8,155.00	\$ 7,950.00	\$ 7,800.00	\$ 9,218.00	\$ 8,200.00
General Contributions	199,799.32	199,620.13	\$ 188,440.92	\$ 220,000.00	\$ 245,216.85	\$ 227,550.00
Interest Income	134.63	126.84	\$ 2,639.81	\$ 3,700.00	\$ 5,135.00	\$ 4,000.00
Mortgage Contributions	39,992.00	20,412.00				
Processing Fee Donation	178.51	240.54	\$ 204.18	\$ 190.00	\$ 296.63	\$ 250.00
Rental Income	0.00	0.00	\$ -	\$ 5,000.00	\$ -	\$ -
<b>Total General</b>	<b>244,434.46</b>	<b>228,554.51</b>	<b>\$ 199,234.91</b>	<b>\$ 236,690.00</b>	<b>\$ 259,866.48</b>	<b>\$ 240,000.00</b>
<b>Expense</b>						
65000 · Operations						
65050 · ELCA Contribution	17,986.42	17,400.12	\$ 16,959.67	\$ 19,800.00	\$ 21,710.50	\$ 20,475.00
65060 · Evangelism						
65062 · Communication	627.65	0.00	\$ 784.70	\$ 1,050.00	\$ 949.57	\$ 1,050.00
65063 · Evangelism Team	0.00	0.00	\$ -	\$ -	\$ -	\$ 200.00
65064 · Communication Specialist	0.00	0.00	\$ -	\$ -	\$ -	\$ -
Total 65060 · Evangelism	627.65	0.00	\$ 784.70	\$ 1,050.00	\$ 949.57	\$ 1,250.00
65080 · Congregational Outreach						
65083 · Serve Wenatchee Valley	0.00	0.00	\$ -	\$ -	\$ -	\$ -
65087 · Campus Ministry	0.00	0.00	\$ -	\$ -	\$ -	\$ -
Total 65080 · Congregational Outreach	0.00	0.00	\$ -	\$ -	\$ -	\$ -
65100 · Adult Education						
65101 · Adult Education Team	0.00	0.00	\$ -	\$ -	\$ -	\$ -
65102 · Christ In Our Home	303.52	336.28	\$ 336.52	\$ 440.00	\$ 434.40	\$ 440.00
65103 · The Living Lutheran	538.06	531.80	\$ -	\$ 660.00	\$ 294.90	\$ 300.00
Total 65100 · Adult Education	841.58	868.08	\$ 336.52	\$ 1,100.00	\$ 729.30	\$ 740.00
65110 · Sunday School and VBS	309.47	612.27	\$ 3,472.81	\$ 1,155.00	\$ 599.58	\$ 700.00
65120 · Youth and Family						
65121 · Youth Ministries	0.00	0.00	\$ -	\$ 250.00	\$ 33.96	\$ 100.00
65122 · Chaperones	220.00	0.00	\$ 250.00	\$ 1,000.00	\$ 65.00	\$ 500.00
65123 · Camperships	0.00	0.00	\$ 250.00	\$ 1,000.00	\$ -	\$ 500.00
65124 · Confirmation	0.00	0.00	\$ 322.42	\$ 375.00	\$ 223.82	\$ 250.00
65125 · Sunday School Director	0.00	0.00	\$ -	\$ 3,700.00	\$ 3,300.00	\$ 3,600.00
65126 · Confirmation Advisor	0.00	0.00	\$ -	\$ 2,800.00	\$ 2,900.00	\$ 3,100.00
65127 · Nursery Supervisor	0.00	0.00	\$ -	\$ 2,600.00	\$ 2,400.00	\$ -
Total 65120 · Youth and Family	220.00	0.00	\$ 822.42	\$ 11,725.00	\$ 8,922.78	\$ 8,050.00
65130 · Worship and Music						
65131 · Resources	0.00	333.25	\$ 178.88	\$ 300.00	\$ 394.03	\$ 300.00
65132 · Bulletins	465.03	595.66	\$ 465.89	\$ 500.00	\$ 487.61	\$ 500.00
65133 · Altar	923.78	332.29	\$ 666.14	\$ 800.00	\$ 972.85	\$ 800.00
65135 · Music	97.54	489.90	\$ 81.36	\$ 250.00	\$ 97.50	\$ 100.00
65136 · Licensing	817.92	0.00	\$ -	\$ 300.00	\$ 300.00	\$ 350.00
Total 65130 · Worship and Music	2,304.27	1,751.10	\$ 1,392.27	\$ 2,150.00	\$ 2,251.99	\$ 2,050.00
65140 · Stewardship	1,173.98	1,135.53	\$ 934.79	\$ 1,000.00	\$ 1,214.57	\$ 1,100.00
65150 · Service Care						
65151 · Kitchen Supplies	691.26	719.70	\$ 664.01	\$ 750.00	\$ 653.84	\$ 750.00
65152 · Hospitality	76.91	217.58	\$ 492.62	\$ 700.00	\$ 377.65	\$ 400.00
Total 65150 · Service Care	768.17	937.28	\$ 1,156.63	\$ 1,450.00	\$ 1,031.49	\$ 1,150.00





# Financial - General Fund 2025 Statement of Financial Income & Expense, Historical Data and 2026 Budget

## 65160 · Building

65161 · Mortgage Principal	32,757.60	16,906.36	\$ -	\$ -	\$ -	\$ -	\$ -
65162 · Mortgage Interest	7,234.40	3,969.47	\$ -	\$ -	\$ -	\$ -	\$ -
65163 · Utilities	5,380.86	6,289.04	\$ 6,336.63	\$ 6,600.00	\$ 6,781.40	\$ 8,000.00	
65164 · Building Insurance	5,105.00	5,345.68	\$ 5,862.08	\$ 6,090.00	\$ 6,188.92	\$ 6,500.00	
65164a · Goldeneast HOA	684.00	1,140.00	\$ 855.00	\$ 1,140.00	\$ 855.00	\$ 1,140.00	
65165 · Telephone	1,802.88	1,860.70	\$ 1,853.01	\$ 2,000.04	\$ 1,881.26	\$ 2,000.00	
65166 · Building Interior Maintenance	12,125.14	16,781.07	\$ 21,628.22	\$ 10,899.96	\$ 7,986.51	\$ 8,500.00	
65166a · Bldg Interior Projects	0.00	0.00	\$ 22.00	\$ 1,000.00	\$ 275.18	\$ 750.00	
65167 · Tax - Property	3,661.16	4,095.12	\$ 4,565.16	\$ 4,700.00	\$ 5,087.63	\$ 5,100.00	
65168 · Exterior Property Mntc/Projects	5,001.71	4,541.62	\$ 5,241.10	\$ 5,000.00	\$ 1,035.43	\$ 2,000.00	
65169 · Equipment	0.00	712.75	\$ -	\$ 400.00	\$ 1,351.56	\$ 400.00	
65169a · Equipment Mntc & Fuel	358.19	409.53	\$ 236.95	\$ 500.00	\$ 293.51	\$ 500.00	
<b>Total 65160 · Building</b>	<b>74,110.94</b>	<b>62,051.34</b>	<b>\$ 46,600.15</b>	<b>\$ 38,330.00</b>	<b>\$ 31,736.40</b>	<b>\$ 34,890.00</b>	

## 65170 · Travel

65171 · Conferences	665.00	850.00	\$ 1,258.00	\$ 2,400.00	\$ 1,106.97	\$ 1,500.00	
65172 · Mileage	2,680.10	2,969.14	\$ 2,332.24	\$ 3,600.00	\$ 1,995.28	\$ 3,000.00	
65173 · Moving Expense	0.00	0.00	\$ 5,000.00	\$ -	\$ -	\$ -	
<b>Total 65170 · Travel</b>	<b>3,345.10</b>	<b>3,819.14</b>	<b>\$ 8,590.24</b>	<b>\$ 6,000.00</b>	<b>\$ 3,102.25</b>	<b>\$ 4,500.00</b>	

## 65180 · Administrative

65181 · Office Supplies	1,630.88	1,154.33	\$ 1,300.19	\$ 1,300.00	\$ 2,193.67	\$ 2,000.00	
65182 · Office Equipment Maintenance	1,013.54	1,348.31	\$ 1,496.16	\$ 1,560.00	\$ 1,545.60	\$ 1,610.00	
65183 · Office Equipment	2,433.36	2,027.80	\$ -	\$ 1,400.00	\$ 396.00	\$ 1,500.00	
65184 · Postage	803.00	958.00	\$ 927.68	\$ 1,050.00	\$ 955.50	\$ 1,050.00	
65185 · Continuing Education	850.00	435.76	\$ 600.00	\$ 1,450.00	\$ 991.83	\$ 1,000.00	
65186 · Professional Expenses	220.00	264.27	\$ -	\$ 250.00	\$ 250.00	\$ 250.00	
65188 · Accounting Services	3,575.00	3,915.00	\$ 3,969.00	\$ 4,500.00	\$ 4,004.00	\$ 4,000.00	
<b>Total 65180 · Administrative</b>	<b>10,525.78</b>	<b>10,103.47</b>	<b>\$ 8,293.03</b>	<b>\$ 11,510.00</b>	<b>\$ 10,336.60</b>	<b>\$ 11,410.00</b>	

## 66000 · Payroll Expenses

66010 · Pastor							
66011 · Salary	5,308.99	8,562.48	\$ 21,837.82	\$ 42,355.00	\$ 42,354.96	\$ 51,740.00	
66012 · Housing	80,316.01	39,958.38	\$ 36,666.38	\$ 24,000.00	\$ 24,000.00	\$ 20,000.00	
<b>Total 66010 · Pastor</b>	<b>85,625.00</b>	<b>48,520.86</b>	<b>\$ 58,504.20</b>	<b>\$ 66,355.00</b>	<b>\$ 66,354.96</b>	<b>\$ 71,740.00</b>	

## 66020 · Support Staff

66021 · Ministry Associate	21,930.75	24,942.08	\$ 25,597.00	\$ 30,475.00	\$ 24,887.25	\$ 22,880.00	
66022 · Pianist	4,480.00	4,550.00	\$ 4,060.00	\$ 4,550.00	\$ 4,350.00	\$ 4,410.00	
66023 · Supply Pastors	400.00	12,007.60	\$ 5,901.85	\$ 2,500.00	\$ 364.48	\$ 1,675.00	
66026 · Janitorail & Maintenance	0.00	0.00	\$ -	\$ 5,800.00	\$ 5,725.00	\$ 7,000.00	
<b>Total 66020 · Support Staff</b>	<b>26,810.75</b>	<b>41,499.68</b>	<b>\$ 35,558.85</b>	<b>\$ 43,325.00</b>	<b>\$ 35,326.73</b>	<b>\$ 35,965.00</b>	

## 66030 · Benefits & Payroll Tax

66031 · Pastor Pension	14,932.56	10,592.54	\$ 6,218.97	\$ 7,144.00	\$ 7,120.51	\$ 7,724.00	
66032 · Pastor Social Security Allowanc	6,550.31	3,821.02	\$ 4,475.68	\$ 5,077.00	\$ 5,007.00	\$ 5,500.00	
66033 · Pastor Medical Insurance	14,322.85	8,760.27	\$ 22,269.95	\$ 24,384.00	\$ 24,403.97	\$ 27,150.00	
66034 · Pastor Medical Reimbursement	827.07	769.95	\$ -	\$ -	\$ -	\$ -	
66035 · Federal Employment Taxes	1,772.37	1,799.11	\$ 1,958.19	\$ 2,800.00	\$ 2,411.13	\$ 2,800.00	
66036 · State Disability	760.30	684.18	\$ 921.66	\$ 1,400.00	\$ 1,312.57	\$ 1,400.00	
66038 · WA CARES/FML	3.11	28.91	\$ 427.00	\$ 600.00	\$ 879.34	\$ 1,200.00	
<b>Total 66030 · Benefits &amp; Payroll Tax</b>	<b>39,168.57</b>	<b>26,455.98</b>	<b>\$ 36,271.45</b>	<b>\$ 41,405.00</b>	<b>\$ 41,134.52</b>	<b>\$ 45,774.00</b>	

## Total 66000 · Payroll Expenses

<b>Total 66000 · Payroll Expenses</b>	<b>151,604.32</b>	<b>116,476.52</b>	<b>\$ 130,334.50</b>	<b>\$ 151,085.00</b>	<b>\$ 142,816.21</b>	<b>\$ 153,479.00</b>	
---------------------------------------	-------------------	-------------------	----------------------	----------------------	----------------------	----------------------	--

## Total 65000 · Operations

<b>Total 65000 · Operations</b>	<b>263,817.68</b>	<b>215,154.85</b>	<b>\$ 219,677.73</b>	<b>\$ 246,355.00</b>	<b>\$ 225,401.24</b>	<b>\$ 239,794.00</b>	
---------------------------------	-------------------	-------------------	----------------------	----------------------	----------------------	----------------------	--

## GENERAL FUND BALANCE GAIN (LOSS)

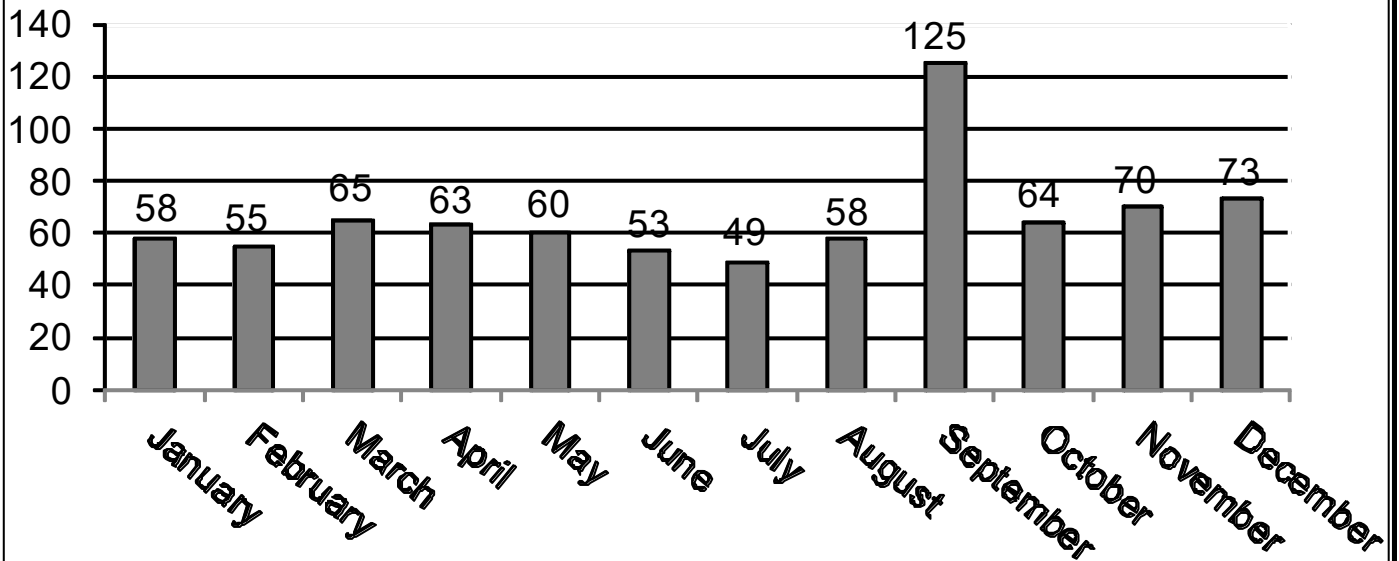
**-19,383.22    13,399.66    \$ (20,442.82)    \$ (9,665.00)    \$ 34,465.24    \$ 206.00**



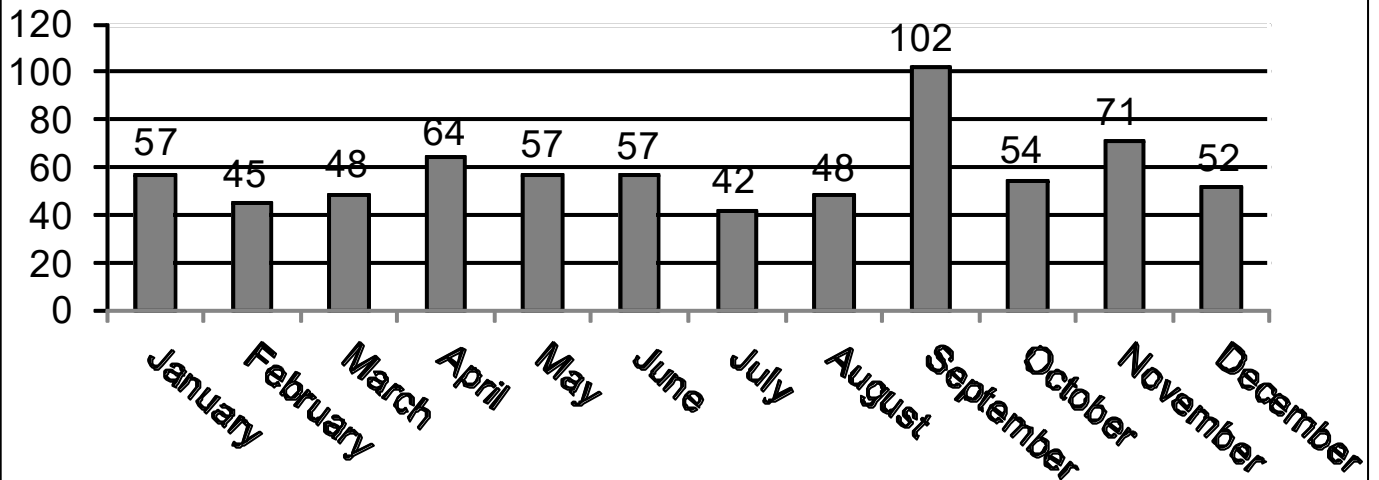




## 2025 Monthly Average In-person Attendance



## 2025 Monthly Average Livestream Attendance





## 2016 - 2025 Yearly Average Attendance

- ♦ 2016 - 96
- ♦ 2017 - 87
- ♦ 2018 - 75
- ♦ 2019 - 66
- ♦ 2020 - 160 (No In-person-Livestream Only)
- ♦ 2021 - 97 (In-person & Livestream Combined)
- ♦ 2022 - 48 (In-person) 78 (Livestream)
- ♦ 2023 - 59 (In-person) 63 (Livestream)
- ♦ 2024 - 60 (In-person) 66 (Livestream)
- ♦ 2025 - 66 (In-person) 58 (Livestream)

Livestream views were multiplied by two per worship to equal the total livestream attendance. A formula suggested by the Northwest Intermountain Synod to help better account for livestream attendance.

**\*\*2021- 2025** attendance number is separated into In-person worship average and livestream views average.



## Special Services for 2016- 2025

	<u>2016</u>	<u>2017</u>	<u>2018</u>	<u>2019</u>	<u>2020</u>	<u>2021</u>	<u>2022</u>	<u>2023</u>	<u>2024</u>	<u>2025</u>
Ash Wednesday	44	39	24	35	32	68	23 (in-person) 30 (livestream)	23 (in-person) 30 (livestream)	32 (in-person) 56 (livestream)	37 (in-person) 52 (livestream)
Lenten Services, Maundy Thursday, Good Friday (average)	50	36	23	30	65	39	20 (in-person) 24 (livestream)	46 (in-person) 27 (livestream)	28 (in-person) 20 (livestream)	26 (in-person) 35 (livestream)
Easter	264	271	154	196	400	217	130 (in-person) 90 (livestream)	123 (in-person) 58 (livestream)	134 (in-person) 110 (livestream)	128 (in-person) 126 (livestream)
Advent (average)	30	20	24	20	31	31	25 (in-person) 70 (livestream)	23 (in-person) 20 (livestream)	15 (in-person) 34 (livestream)	19 (in-person) 29 (livestream)
Christmas Eve	205	202	202	153	310	235	70 (in-person) 80 (livestream)	12/24/23 10am 62 (in-person) 18 (livestream)	96 (in-person) 78 (livestream)	88 (in-person) 96 (livestream)
Christmas Day							26 (in-person) 78 (livestream)	12/24/23 7pm 64 (in-person) 68 (livestream)		



# 2025 Statistical Report of Members

## A. Pastoral Acts:

### 1. Baptisms:

### 2. Marriages:

### 3. Funerals:

4.5.25	Scot Erickson
10.10.25	Elmer Stitzlein



### 4. Confirmed:

## B. Received into Membership

### 1. Affirmation of Faith:

### 2. By Baptism:

### 3. By Transfer:

### 4. Reinstated:



## C. Removed from Active Membership

### 1. By Death:

Scot Erickson, Jean Roberts, Elmer Stitzlein

### 2. Transfer to other ELCA Congregations:

### 3. To other Lutheran Congregations:

### 4. To non-Lutheran Congregations:

### 5. To inactive or moved out of area without transfer:

Phil & Fran Aamodt, Bill & Marcy Hericks, John & Sharon Musser, Allison Price, Randy Ross, Ted (& Lynda) Schlosser, Denny & Lisa Snyder (Hollis & Hope), Bonnie (& Spencer) Stimmel (Benjamin, Matthew, & Shelby)

### 6. By statistical adjustment:



# 2025 Statistical Report of Members

## Summary

		<u>CONFIRMED</u>	<u>BAPTIZED</u>
<b>Membership 12-31-24</b>		<b>146</b>	<b>168</b>
<b>Members Received:</b>	Baptism	0	0
	Affirmation of Faith	0	0
	Transfer from ELCA congregations	0	0
	From other Lutheran Congregations	0	0
	Confirmed	0	0
	Reinstated	0	0
	Statistical Adjustment	0	1
	<b>Total Received:</b>	<b>0</b>	<b>1</b>
<b>Members Removed</b>	Death	3	3
	Transfer to other ELCA Congregations	0	0
	To non-ELCA or non-Luth. Congregations	0	0
	To Responsibility list (inactive)	14	17
	Statistical Adjustment	0	0
	<b>Total Removed:</b>	<b>17</b>	<b>20</b>
<b>Membership 12-31-25</b>		<b>129</b>	<b>149</b>

## 2025 Active Membership List

<u>Confirmed</u>	<u>Baptized</u>	<u>Last Name</u>	<u>Adult Member</u>	<u>Children Member</u>
1	1	Anderson	Dee	
2	2	Arbaugh	Steve & Liz	
1	1	Babcock	Steve	
2	2	Bersch	Wayne & Janelle	
1	1	Bersch	Sarah	
1	1	Bersch	Matthew	
2	2	Betzing	John & Patti	
1	1	Betzing	Jack	
1	1	Black	Ann	
2	4	Bonwell	Heidi & (Jason)	Holden, Nolan & Adelie
1	2	Britt-Morris	Cathy & (Ethan)	Maggie
2	2	Britt	Gale & Becky	
2	2	Britt	Ken & Joni	
1	1	Bywater	Mary	
2	2	Cain	Ivan & Judy	





## 2025 Active Membership List

<u>Confirmed</u>	<u>Baptized</u>	<u>Last Name</u>	<u>Adult Member</u>	<u>Children Member</u>
4	5	Chalmers	Kent & Annie	Brooke, Oliver & Finn
2	2	Cockle	Debbie & James	
1	1	Collinge	Valdine	
1	1	Conde	Debbie	
1	1	Cooper	Bonnie	
1	1	Davila	Mondo	
2	2	Day	Jack & Lisa	
1	1	Day	Zachery	
1	1	Day	Elaina	
2	2	Evans	John & Kathy Jo	
1	1	Forsberg	Shan	
1	1	Fries	Bob	
1	1	Fries	Scott	
2	2	Gallegos-Montoya	Norma & Gustavo	
2	3	Gross	Jeff & Jamie	Hudson
1	1	Gubsch	Susan	
1	1	Guizzetti	Pat	
2	2	Haven	Pr. Dave & LeAnn	
0	3	Haugen	(Ty & Andrea)	Torbin, Griffin, Hannah
1	1	Herring	George	
4	4	Herring-Bay	Bruce Herring, Julie Bay	Rebecca & Nathan Bay
1	1	Heuer	Maggie	
2	2	Hiatt	Dan & Debbie	
1	1	Holmes	Laurie	
2	2	Hussey	Mike & Judy	
2	2	Johns	Cal & Terry	
2	2	Johnson	Steve & Dee	
1	1	King	Patty	
1	1	Lanphere	Rick	
2	2	Ledgerwood	Katie & Greg	
1	1	Linebarier	Kaitlyn	
1	1	Ludeman	Clarice	
1	1	McCabe	Carol	
1	1	McCann	June	
2	2	McCray	Susan & Jason	





## 2025 Active Membership List

<u>Confirmed</u>	<u>Baptized</u>	<u>Last Name</u>	<u>Adult Member</u>	<u>Children Member</u>
1	1	McCray	Claire	
1	1	McCray	Valerie	
2	2	McKinney	Leon & Bonnie	
2	2	Mettler	Darald & Carol	
2	2	Miller	Bill & Selma	
2	2	Moore	J. Douglas & Deborah	
2	2	Myrene	Gary & Suzanne	
2	2	Neal	Mark & Laurie	
1	1	Ogle	Terry	
2	2	Peterson	Justin & Charly	
1	1	Peterson	David	
4	4	Peterson	Dave & Marcia	Annika & Maren
2	2	Plinski	Duane & Roxy	
2	3	Price	Jason & Darcie	Cole
1	5	Russ	(Greg & Victoria)	Kamyrn, Peter, AC, Jesse, Lilly
1	1	Schloe	Glen	
2	2	Schweitzer	Betsy & Mark	
1	1	Schweitzer	Katelyn	
2	2	Seale	Richard & Jacki	
2	2	Smith	Brant & Elaine	
2	7	Stumpf	Chuck & Kenda-Ruth	Serenity, Blaze, Jeremiah, Payton & Elijah
2	2	Taplett	Larry & Ginny	
2	2	Thompson	Bob & Sue	
1	1	Thompson	Doris	
1	1	Thompson	Karen	
1	1	Thorson	Malissa	
2	2	Tonkin	Dennis & Ro	
1	2	Vertrees	(Brian & Brianne)	Langley & Everly
1	1	Walker	Margaret	
1	1	Wallis	Pam (& RJ)	
1	1	Weaver	Barbara (& Jeremy)	





## Statistics

# 2025 Active Membership List

<u>Confirmed</u>	<u>Baptized</u>	<u>Last Name</u>	<u>Adult Member</u>	<u>Children Member</u>
1	1	Weaver	Marilynn	
2	2	Webb	Gale & Marcia	
1	1	Werner	Alice	
1	1	Willms	Arnie	
<b>129</b>	<b>148</b>	<b>85 Total (Families)</b>		





